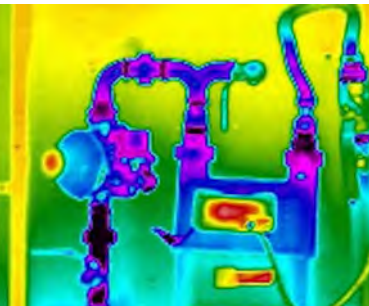
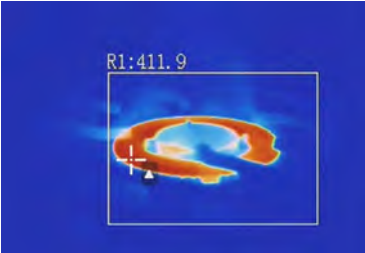
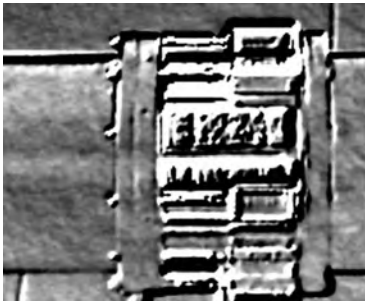


- Onboard image enhancement ensures crisp and vibrant thermal images
- Capable of both gas detection and radiometric temperature measurement for thermal inspections
- Suitable for a wide range of electric power utilities, oil and natural gas operations, chemical, manufacturing facilities, food and agriculture industry



THERMOGRAPHY CAMERAS



SPECIFICATION

| Model | GD88 |
|-----------------------------------|--|
| Detector Type | Uncooled Microbolometer |
| Resolution | 640×512 |
| Super Resolution | Up to 1280X1024 pixels |
| Spectral Range | 7μm ~ 14 μm |
| Wavelength | 50Hz |
| NETD | ≤23mK@30°C |
| FOV | 20.8° × 16.6° |
| IFOV | 0.6mrad |
| Digital Zoom | 1x-16x continuous zoom |
| Focus | Manual |
| Detectable Gases | Methane, Freon, SF6, Ammonia, Propene(HFO-1234yf), Ethylene, Nitric Oxide, Sulfur Dioxide, Phenol, etc. |
| Display | |
| Screen | 4.3", 800*480 Touch screen |
| Digital Camera | 5-megapixel, FOV: 24°x 18°, with built-in LED lights |
| Image Mode | Infrared, Visible light image, PNP, Multi-band fusion image MFI, Thermal superposition image |
| Palette | 12 Palettes (iron red, rainbow, white hot, black hot, etc) |
| Image Adjustment | Manual/Automatic |
| Measurement & Analysis | |
| Temperature Measurement Range | -20°C-650°C(expandable to 1500°C) |
| Temperature Accuracy | Temperature measurement range from 0°C to 100°C, is + 1°C; Other temperature measurement ranges is ± 2°C or ± 2%, take the maximum value |
| Temperature Measurement Mode | Real-time 20 movable points, lines, area temperature measurement (maximum temperature, lowest temperature capture, average temperature measurement), full-screen maximum temperature and minimum temperature capture, isothermal analysis, temperature difference measurement, temperature alarm (sound, colour) |
| Emissivity | Custom input and material table selection, range 0.01-1.0 |
| Measurement Corrections | Emission rate, ambient temperature, reflection temperature, relative humidity, temperature measurement distance, and infrared window compensation |
| Rangefinder | Distance shown on Screen |
| Image Storage and Transfer | |
| Image Storage | TF card, standard 64GB |
| Image Storage Mode | Infrared images and Digital Camera images are saved simultaneously |
| IR Image /Video Format | JPEG format, Infrared raw measurement data images; Radiation infrared video recording and non-radiation infrared video recording in H.264 format |
| Digital Camera Image Format | JPEG format, H.264 format for Digital Camera video recording |
| Auto Capture on Camera | Yes |
| Voice | Supports 180 seconds of voice annotation, stored together with the image |
| Text Annotation | Preset text comments with editable text |
| Transfer Interfaces | Type C, HDMI, TF card, Bluetooth, and WiFi |
| Multiple Function button | 2 Programmable buttons |
| Power supply | |
| Battery Type | Replaceable & Rechargeable Lithium Ion |
| Battery Hours | Approximately 5 hours Continuous working Time (25°C ambient temperature) |
| Environmental | |
| Working Temperature | -40°C-50°C |
| Storage Temperature | -40°C-70°C |
| Vibration&Shock | 2G-IEC 60068-2-6:1995/25G-IEC 60068-2-27:2008 |
| ATEX Proof | Ex ic nC IIC T4 Gc |
| Enclosure Rating | IP54 |
| Physical Specification | |
| Weight | ≤1.1kg(With a standard lens and batteries) |
| Dimensions | 308×124×197mm |
| Accessories | IR camera, IR filter, rechargeable lithium battery * 2, Charging Dock, power adapter, USB cable, HDMI cable, TF card, Card reader, Packing list, Calibration Certificate, User manual, Warranty card, Carry Case |